



ASPIRE

A PUBLICATION OF MISSISSIPPI STATE HOSPITAL

❖ HOPE ❖ SAFETY ❖ RECOVERY

Farmer Jim Neal Golf Classic

By: Julie Cox

The 2023 Farmer Jim Neal Golf Classic was held on Friday, April 14 under sunny skies at beautiful Whisper Lake Country Club in Madison. Twenty-eight teams teed off to support the fundraising efforts of Friends of Mississippi State Hospital, Inc. The FJN Golf Classic is the largest annual fundraiser for Friends of MSH, whose primary function is to promote awareness of mental health issues and raise funds for projects that enhance the quality of life for individuals served at the hospital throughout the year.

The C Spire team of Jack Dean, Chris Hemphill, Adam Panetta, and Philip Thornton won the day by taking first place in this year's tournament. Second place went to the Whisper Lake CC Team of Woody Strode, Rick Cleveland, Mike Justice, and Roy Boisture. The BankPlus team of Joel Ross, Pat Renegar, Dave Clements, and Will White claimed third place.

Friends is so thankful for all of our sponsors that made the tournament a success. Sponsors include: Title Sponsor – BankPlus; Platinum Sponsor – Cura Hospitality; Eagle Sponsor – Mid South Rehab Services; Golf Cart Sponsor – Brandi's Hope Community Services; Par Sponsors – The Arc of Mississippi, Bank of Yazoo, Codaray Construction, LLC., East Mississippi State Hospital, Hinds Behavioral Health Services, and Mississippi Hospital Association; Beverage Tent Sponsors – Chem-



Anna Laura and Jeff Hatchett, Anna Lauren is the granddaughter of Farmer Jim Neal.

Aqua/NCH Inc. and Lane-Tedder & Associates, Inc.; Tee-Sign Sponsor – Nucor Steel Jackson, Inc.; Gift Donors – Amerigo, Bank of Yazoo, Bass Pro Shops, Boudreaux's, Candence Bank, Char, Chic-fil-A, C Spire, Donna Brown, Kathy Denton, Frisco Deli, Heartwood, Home Depot, Sissy and Tony Gomillion, Kim

Edwards, Jackson Newell Paper Company, Angela Lott, Lost Pizza, Mangia Bene Restaurant, Newk's, Rankin First, Revell Hardware, Sheila Shows, Van's Sporting Goods, Valerie Thornton, Table 100, Van's Sporting Goods, Walmart, Walker's Drive Inn, and Zaxby's. A special thanks to BankPlus, Ben Nelson Golf Carts,

Cowboy Maloney, Cura Hospitality, and Whisper Lake Country Club.

Committee members include Jonathan Robinson and Jeremy Allen with Cura Hospitality; Bill Bobbs, Tony Gomillion, Bobby Stephens, and Ray Wallace from the Friends of MSH Board; Tommy Bradley and Anna Lauren Hatchett from the Neal Family; Kyle Sisk, Whisper Lake Pro; and Joel Ross, BankPlus, and Bo Chastain, MSH Director, serving as co-chairs. Kathy Denton and Sheila Shows, Public Relations, serve as tournament coordinators for the hospital. The day would not be possible without the work of some amazing volunteers, including representatives from Mid South Rehab Services and Bank of Yazoo.

The tournament also heavily depends on MSH staff to assist with getting all needed supplies (tables/chairs/grills/coolers/tents, etc...) to the event, set up and then taken down and returned to MSH. Members of this group have also traditionally been part of the cooking team. Representatives from the Maintenance Department included Craig Martin, Jason Thornton, Riley Savell, Chuck Shows, and Ryan VanGordan. MSH Police Officer Derrick Berry was also part of the support team. Thank you to all of them for their work to make this event successful!

An extra special thank you to the family of Farmer Jim Neal who continue to allow Friends to use his namesake for this tournament. Thank you to Anna Lauren Hatchett and Tommy Bradley for serving as Honorary Chairmen and attending to represent the Neal family to be a part of this day of good food, good friends, and a great day of golf!



First Place - C Spire Team – Jack Dean, Chris Hemphill, Adam Panetta, Philip Thornton



Second Place - Whisper Lake Team – Woody Strode, Rick Cleveland, Mike Justice, Roy Boisture



Third Place - BankPlus Team – Joel Ross, Pat Renegar, Dave Clements, Will White



Friends of MSH Team – Greg Nail, Bobby Stephens, Ray Wallace, Bill Bobbs



Department of Mental Health Team – Brent Haley, Michael Haley, Jake Hutchins, Wes Gibson



Codaray Construction Company Team – Collin Jones, Luke Robinson, Jeff Upchurch, Brett Sanders



The Arc of MS Team – Peyton Farner, Nancy Cline, JW Cline, Pryce Hunter



Mississippi Hospital Association Team – Steve Lesley, Perry Egger, Richard Robertson, Tim Moore



Bank of Yazoo Team – Stephen Harris, Christian Boggan, Andy Wogoman, Ben Aldridge



Mid-South Rehab – Steve Cole, Paul Breazeale, Mark Buckley, Guy Hovis



Hinds Behavioral Health Team – Carl Legate, Ivy Kitchen, Detrick Johnson, Jeffrey Blackmon



Carolyn Trigg, Bank of Yazoo Volunteer





Left to Right: Joel Ross, Anna Laura Hatchett, Linda Neal, Tommy Bradley, Barry Neal, Jeremy Allen, Randy Watkins, Amy Walker, James Chastain.

MSH Day 2023

By: Julie Cox

With blue skies and a slight breeze, MSH Day is back! On Wednesday, May 17, MSH Day returned to the Mississippi State Hospital campus after a seven or eight-year hiatus. Amanda Matson, Director of Support Services, first approached Leadership in January with the idea of bringing MSH Day back to campus after hearing from various people that they missed MSH Day and what it meant to them - a sense of home and community. Matson said, "Leadership responded with a "Yes! Absolutely!" and jumped right in to make the day a reality."

The first year back was not the size and magnitude of the former event, but by keeping the event small, Matson says, "We were able to focus on who we are and the people we are trying to serve. So many of the booths were great and the departments made sure there was something out here that everybody can do. The Residency program really jumped in with a variety of activities, even though many of them had never seen an MSH Day before."

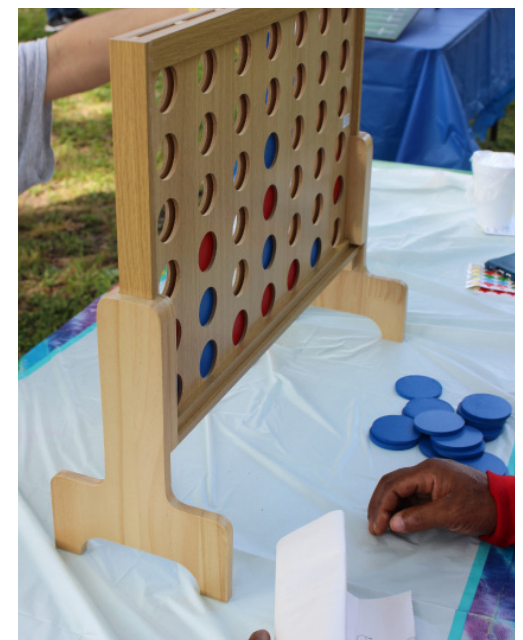
Matson added, "It's been a joy seeing the patients enjoy themselves." And that was



Tammy Kopesky, Dr. Joe Griebler, Julie Johnson, and Amanda Matson

the goal, to be outside and see patients smiling; the staff and patients were able to look forward to something outside of the norm and having a good time. One employee likened it to, "going to Walmart for the first time without a mask." It was a coming out party, the start of getting back to what we do best, a team of home and community.

Dr. Jonathan Sadler, a second year Psychiatry Resident, who served his time in the dunking booth during the event and estimated he was dunked around 30 times, said, "MSH Day was fun. We had a good turnout and everyone seemed to be having fun. It was refreshing seeing the patients in a relaxed environment, socializing with everybody. It's a good feeling when you see them do that. Obviously, discharge is the



ultimate goal, but with an event like this, they can come out and have a good time while they are working toward that.”

It was a fun day, full of recreational opportunities. Stacey Davis, Director of Therapeutic Recreation, was pleased with the day’s activities. She has served at MSH for 30 years and was a part of the original MSH Day events. She shared that, “It was great having this event again and I can’t wait to experience it for many more years. It’s an enjoyment for the patients to get out and it’s good for staff to mingle in a fun environment.”

Matson shared, “Many people have been asking about next year. We want to continue to encourage positive behaviors among patients and residents and re-establish that sense of community and give everyone something to look forward to each year. This event supports the culture at MSH and helps improve (employee) retention and relationships, so we will be working to make things even better.”



Mississippi Health Care Foundation Pilots Program at Jaquith Nursing Home



Cintarrio Palmer (JNH Recreation Supervisor), Angie Whittington (MHCF Board Member), Lee Varner (JNH Director), Shonnett J. Wilson (B33), Sherelda Jones (B33/31), Daniel Ratliff (B78), Brian Dickerson (MHCF Board Member), Kathy Watkins (MHCF Vice President), Marilynn Winborne (MHCF Manager), Gina A. Franklin (B34), Kevin Moore (B78), Bridget Amos (B28/34), and Deborah Bland (B31)

By: Julie Cox

The Mississippi Health Care Foundation (MHCF) helps bridge the gap between the quality of care provided in nursing home facilities and those special emotional and physical needs not covered by insurance policies, Medicare, Medicaid, or even family members. Recently, MHCF selected Jaquith Nursing Home (JNH) to pilot a new program to reach nursing home residents

with few visitors. JNH staff identified seventy-six residents that met the criteria. Marilynn Winborne, MHCF Manager, along with Board Members, Angie Whittington, Brian Dickerson, and Kathy Watkins (Vice President) delivered the special care packages to Mississippi State Hospital on April 6, 2023. Residents were appreciative of the care packages, which included snacks, socks, puzzle books, and

other comforting items. “Ms. Winborne and the board members were able to visit with four residents on B33 when they delivered care packages, the interaction between them was great to see,” said Lee Varner, JNH Director. Ms. Sherelda Jones, NHA has served as the point of contact between JNH and the Mississippi Health Care Foundation and has worked with them on several projects for JNH residents.

NATIONAL HOSPITAL WEEK WAS MAY 7-13 WE ARE HEALTHCARE!

By: Julie Cox

MSH celebrates and recognizes the dedicated personnel who provide quality care every day at Whitfield Medical Surgical Hospital. Every nurse, doctor, practitioner, and staff member is necessary to deliver the compassion and quality services needed. National Hospital Week was established by the American Hospital Association to shine a spotlight on our many hospitals, health systems, and health care workers who strive to save lives daily.



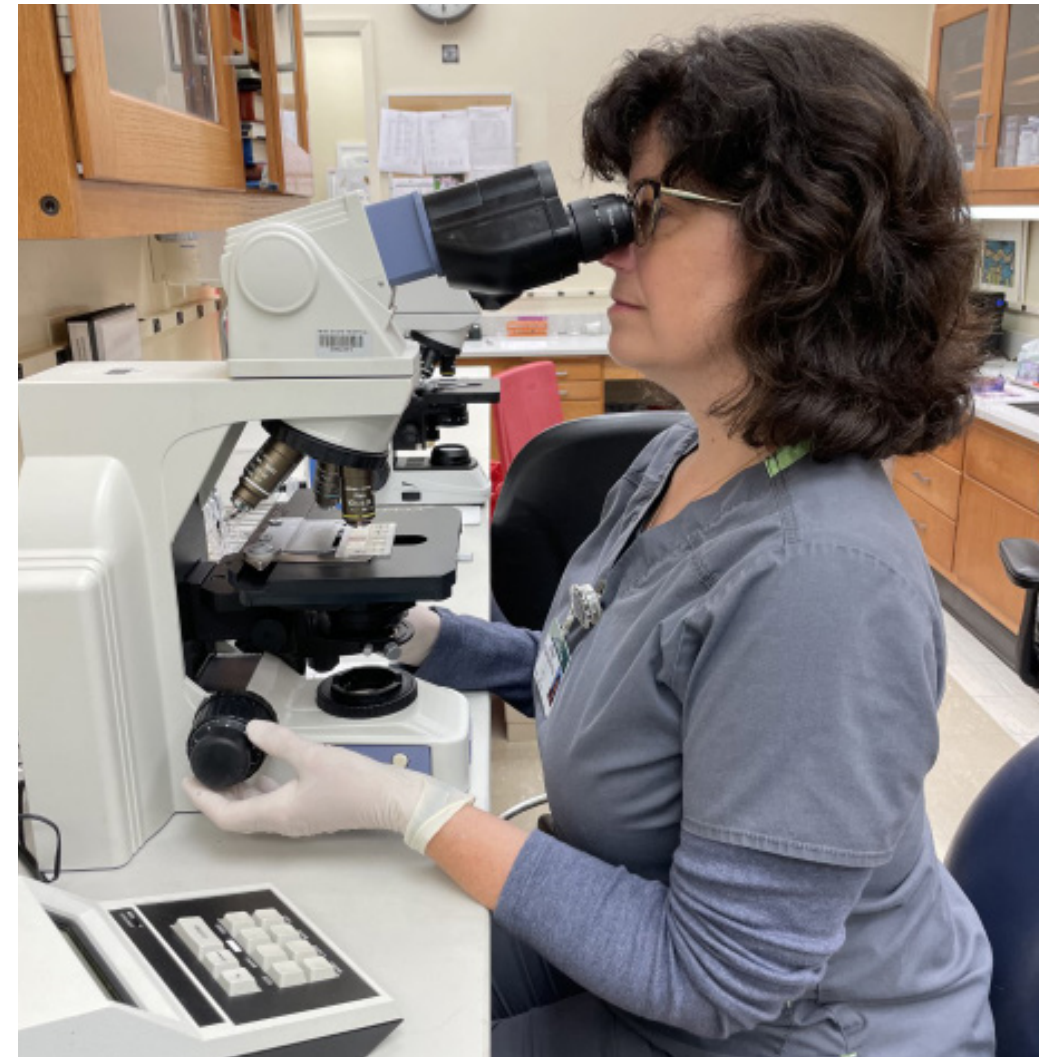
Row 1 – Lee Varner (WMSH Administrator), Ashley McCree (Radiology), Erica McAfee (Administration), Quintina Curtis (CNA), Denise Toribio (ECT), Tamu Leland, LPN (Clinic), Ginnie Arinder (Audiologist) Row 2 – Shalen Lyles (CNA), Brittany Hicks (CPT/LA), Delores Kirkland, LPN (Nurse), Natasha Harris, RN (Clinic Nurse) Row 3 – Aleshia Ford, RN (DON), William D. Coughlin (MD), Michelle Jackson (CUO), Jennifer Diez (MT), Johnnie Clark (Administration)

Medical Laboratory Professionals Week

By: Julie Cox

Medical Laboratory Professionals Week was held April 23-29, and is an annual celebration of medical laboratory professionals, including phlebotomist and pathologists, who play a vital role in health care and patient advocacy!

MSH has a full lab located inside Whitfield Medical Surgical Hospital (WMSH). Joe Thornton and Jennifer Diez share the role of Chief Medical Technologist, they supervise a staff of two part-time and three full-time employees. Thornton has 25 years of experience as a laboratory professional. He worked in the labs at the University of Mississippi Medical Center (UMMC)

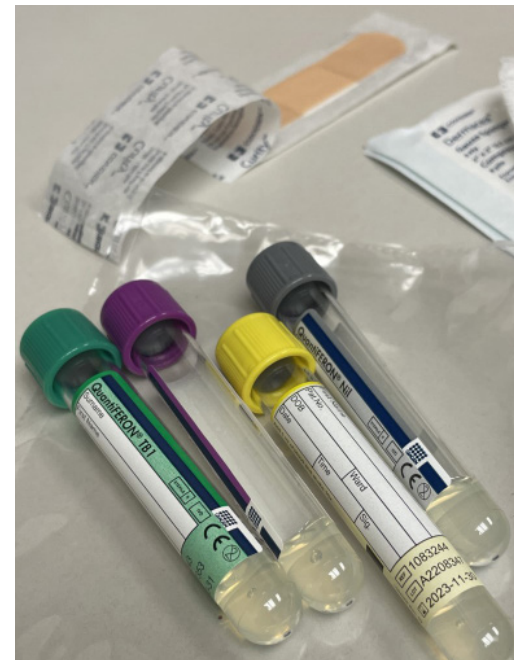


for 20 years before coming to MSH. After working for five years in the WMSH lab, he retired and returned as a contract worker in 2010. Diez also has a wealth of experience

as a laboratory professional, she worked in the NICU lab at UMMC for seven years before coming to work full time at MSH in 2012. In 2018, she decided to pursue



Row 1 – Ramona Doran, RN (Med Surg), Stephanie Oscar (Administration), Archie Charleston (CNA/ECT/Med Surg) Row 2 – Selena Magee (CNA/Med Surg), Elizabeth Henry (CNA/Medical Records), Vacoria Showers (CNA/Med Surg), Brandi Mock, RN (ECT/Med Surg)





other professional opportunities, but we were lucky enough to keep her as a contract worker. They both enjoy the working environment at MSH.

At WMSH, all lab staff are cross-trained to work in all areas of the lab. Pam Magee is usually the first person a patient will see as they enter the WMSH lab. She is a part-time Medical Tech and works in all areas of the lab. Katie Keenan is a Medical Tech and focuses on the Chemistry aspect of the

lab. Donna Schaferkotter, a Medical Tech, focuses on the Hematology testing in the lab. Brittany Hicks and Beverly Lewis are lab assistants and handle Phlebotomy.

The WMSH Lab handles all lab work for MSH and Hudspeth. Lab results are electronically transferred to MSH and Hudspeth doctors. With strict quality controls in place, doctors at MSH and Hudspeth can be confident the results they receive from the WMSH Lab are accurate.

WMSH Lab uses a Levey-Jennings chart to graph quality control data to give a visual indication whether laboratory testing is working well. This quality control measure is run once a day, every day, and is good for a 24-hour period.

The WMSH Lab is equipped for a wide range of testing, the four main areas are Chemistry, Hematology, Urinalysis, and Serology. Lab Hours are Monday through Friday, 7:30 am to 5:00 pm.

MSH February Employees of Month



DIRECT CARE
WILMA LEE
BUILDING 203 (WARD 3), A-SHIFT

Wilma Lee has been named Mississippi State Hospital's February Employee of the Month for Direct Care.

A lifelong resident of Braxton, Lee attended McLaurin High School, Hinds Community College, and Rice College. She serves as a Support Care Professional III in IPS and has been employed at MSH since 1985.

"I am nominating Ms. Lee for the outstanding work she has done for the unit. She is the example of someone that embodies the MSH Core Values of respect, accountability, and teamwork," said Nieshia Taylor, who nominated Lee. "She does an excellent job in completing all her tasks in a timely manner, she works when she is scheduled, and she arrives on time for her shift. Ms. Lee is very respectful to her coworkers and other employees that work around her. She is greatly appreciated for all she does in the unit."



CLINICAL SERVICE
HALEY DYESS
BUILDING 81, A-SHIFT

Haley Dyess has been named Mississippi State Hospital's February Employee of the Month for Clinical Service.

Dyess grew up in Brandon, but now lives in Pearl. She attended Brandon High School, Hinds Community College, and the University of Southern Mississippi. Dyess is a Registered Nurse and serves as a Charge Nurse in IPS, she has been employed at MSH since 2021.

"Haley is a one-of-a-kind nurse. She comes in and immediately starts working every day and tires to set a positive example for other employees. Her communication skills are impressive and it shows, whether she is performing patient care or assisting with doctor's rounds. It has been a privilege watching her grow in her role as charge nurse. Haley consistently performs her duties with a heartfelt smile and a genuine desire to help. Her compassion for others always shines through and her friendliness is appreciated by every person who interacts with her. Haley is a team player and well respected by the staff she supervises, as well as other disciplines on the building. She is often stretched thin with working the floor and completing her charge nurse duties, but she never complains or hesitates to get her work done," said Hollie Vanderford, who nominated Dyess.



SUPPORT SERVICES
JASON THORNTON
BUILDING 53, A-SHIFT

Jason Thornton has been named Mississippi State Hospital's February Employee of the Month for Support Services.

A resident of Rankin County, he attended Rankin Academy. He serves as a Specialized Trades Team Lead in Maintenance/HVAC and has been employed at MSH since 2013.

"Mr. Jason Thornton has a great work ethic. I have seen him time after time go above and beyond to try and ensure maintenance matters are dealt with efficiently and effectively. I have never seen a task too big or too small, and he always seems to take great pride in a job well done. Yet, he never seeks praise or compliments for his work, he just gets the job done. We are lucky to have him at MSH and hope he will stay with the organization for years to come," said Bo Blanks, who nominated Thornton.

2023 February, March & April 20+ Years of Service Recognition

February



MELITA ANN BREEDEN

PROGRAM SPECIALIST IV
BUILDING 67, A-SHIFT

Melita Breeden of the Rockport/Bridgeport Community near New Hebron was recognized for providing 20 years of service to the hospital. Ms. Breeden attended Union Academy, Co-Lin Junior College, and Mississippi State University where she received a Bachelor's degree in Education. She enjoys being at MSH for the patients and loves her work family. In her free time, she likes to deer hunt, listen to and play music, and going to concerts. She is a Program Specialist IV in Service Outcome and has been employed at MSH since 2003.



PAMELA D. HENDERSON

CUSTODIAN
BUILDING 60, A-SHIFT

Pamela Henderson of Florence, MS was recognized for providing 20 years of service to the hospital. Ms. Henderson attended Pearl High School and Hind Community College. She takes pride in keeping her building clean. In her free time, she enjoys couponing and looking at magazines. She is a Custodian at WMSH and has been employed at MSH since 2003..

March



IRMA MAE STEWART

SOCIAL SERVICES PROGRAM COORDINATOR I
BUILDING 22, A-SHIFT

Irma Stewart of Pearl was recognized for providing 25 years of service to the hospital. Ms. Stewart attended Carl Schurz High School in Chicago, IL and Sawyer Business College in Oak Park, IL. In her free time, she enjoys movies, music, fitness, and traveling. She is a Transition Coordinator in Social Services and has been employed at MSH since 1998.

LYDIA L. TAYLOR

SUPPORT CARE PROFESSIONAL TEAM LEAD
BUILDING 46, A-SHIFT

Lydia L. Taylor of Raymond was recognized for providing 20 years of service to the hospital. Ms. Taylor attended Raymond High School and Utica Junior College. She enjoys taking care of her residents at MSH. In her free time, she likes to watch television and spend time with her grandchildren. She is a Support Care Professional Team Lead in IPS and has been employed at MSH since 2003.



STEPHANIE K. OSCAR

ADMIN SUPPORT ASSISTANT III
BUILDING 60, A-SHIFT

Stephanie K. Oscar of Canton was recognized for providing 25 years of service to the hospital. She is an Admin Support Assistant III at WMSH and has been employed at MSH since 1998.

April



CLARICE SHIRLEY ERVING

RECORDS SPECIALIST
BUILDING 21, A-SHIFT

Clarice Shirley Erving of Byram was recognized for providing 25 years of service to the hospital. Ms. Erving attended Raymond High School. She enjoys the people she works with at MSH. In her free time, she likes to read. She is a Records Specialist in Health Records and has been employed at MSH since 1998.



KAVIN W. FRAZIER

SYSTEMS ADMIN SPECIALIST I
BUILDING 64, A-SHIFT

Kevin Frazier of Pearl was recognized for providing 25 years of service to the hospital. Mr. Frazier attended high school in Kosciusko and the University of Mississippi – Ole Miss in Oxford. He enjoys accomplishing goals and responsibilities that help others in their job duties. He is a Systems Admin Specialist I in Information Management and has been employed at MSH since 1998.

CAROLYN JEAN PACK

LAUNDRY WORKER TEAM LEAD
BUILDING 54, A-SHIFT

Carolyn Pack of Brandon was recognized for providing 20 years of service to the hospital. She is a Laundry Worker Team Lead in Environmental Services and has been employed at MSH since 2003.



DIANA ADDISON HUNTER

HUMAN RESOURCES SUPERVISOR
BUILDING 61, A-SHIFT

Diana Hunter of Jackson was recognized for providing 30 years of service to the hospital. Ms. Hunter attended West Point High School and Jackson State University where she earned a Bachelor's degree in Finance. She also completed coursework for Human Resource Certification (HRCP) and is a Certified Public Manager (CPM). She enjoys meeting and helping people. In her free time, she likes to listen to music. She is the Personnel Director and has been employed at MSH since 1993.

ELIZABETH HENRY

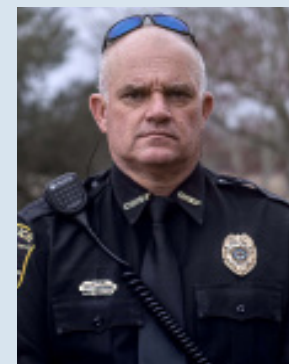
SUPPORT CARE PROFESSIONAL III
BUILDING 60, A-SHIFT

Elizabeth Henry of Crystal Springs was recognized for providing 20 years of service to the hospital. She is a Support Care Professional III at WMSH and has been employed at MSH since 2003.

JACKIE C. DYESS

PSYCHIATRIC NURSE PRACTITIONER
BUILDING 87, A-SHIFT

Jackie C. Dyess of Madison was recognized for providing 25 years of service to the hospital. She is a Psychiatric Nurse Practitioner in Clinical Services and has been employed at MSH since 1998.



NORMAN JEFFERY LUCKEY

LAW ENFORCEMENT OFFICER ADMIN
BUILDING 20, A-SHIFT

Jeff Luckey of Mendenhall was recognized for providing 25 years of service to the hospital. Mr. Luckey attended Brandon High School and Mississippi Law Enforcement Training Academy (MLEOTA). He enjoys protecting the patients and staff at MSH. In his free time, he likes to hunt and fish. He is the campus Police and Fire Chief and has been employed at MSH since 1998.



JEANIFER SMITH WATKINS

VOCATIONAL TRAINING INSTRUCTOR II
BUILDING 32, A-SHIFT

Jeanifer Watkins of Jackson was recognized for providing 25 years of service to the hospital. Ms. Watkins attended Florence High School and Hinds Community College where she studied Medical Coding and Billing. She enjoys working with individuals and patients at MSH. In her free time, she likes to read and listen to music. She is a Vocational Training Instructor II in Service Outcome and has been employed at MSH since 1998.

MSH March Employees of Month



DIRECT CARE
CAITLYN RADICA
BUILDING 81, B-SHIFT

Caitlyn Radica has been named Mississippi State Hospital's March Employee of the Month for Direct Care.

Born in Bakersfield, CA, Radica calls Florence, MS home. She attended Florence High School and Hinds Community College. She serves as a Support Care Professional II in IPS and has been employed at MSH since 2021.

"Caitlyn Radica embodies all of the MSH Core Values. She is incredibly respectful and never complains. One day, both of our shift leaders were out, Caitlyn stepped right up and ran the building with no problem. Her documentation in the chart is phenomenal and she paints a picture of exactly what is going on with the patient, the doctors have even complimented this," said Hollie Vanderford, who nominated Radica. "Working on the Substance Use Service can be challenging, but when you work with someone who always shows respect for her coworkers and patients, plus comes to work with a smile, it makes the day easier. Caitlyn stays over on B-shift many days to ensure proper staffing. We are all thankful for Caitlyn on SUS."



CLINICAL SERVICE
STEPHANIE WARD
BUILDING 90, A-SHIFT

Stephanie Ward has been named Mississippi State Hospital's March Employee of the Month for Clinical Service.

Ward grew up in Magee, but now lives in Brandon. She attended Magee Attendance Center, Hinds Community College, and the University of Southern Mississippi. Ward is a Registered Nurse and serves in IPS/Forensics, she has been employed at MSH since 2004.

"Nurse Ward always goes above and beyond for every patient she has encountered and cared for. She is very knowledgeable, and she helps staff and patients with any questions they may have, especially if a patient's medication changes. She answers their concerns to the best of her ability," said Sambreanna Brumfield, who nominated Ward.

SUPPORT SERVICES
CLARICE EWING
BUILDING 21, A-SHIFT

Clarice Ewing has been named Mississippi State Hospital's March Employee of the Month for Support Services.

Born in Edwards, MS, Ewing now lives in Byram. She attended Raymond High School. She serves as a Records Specialist in IPS and has been employed at MSH since 1998.

"One of Clarice's greatest strengths is that she is a dedicated, hardworking person. She is always prompt, present, and helpful to others. She produces high quality work in managing medical records and can always find the answer for someone who needs help. She assists in the pantry and with the patients when the need arises. She has even come to the aid of fellow employees who were in peril, putting herself at risk for the sake of helping them. She is such an important and special part of our work family on female receiving, and she is very much deserving of being recognized for her contributions," said Jordan Sutton, who nominated Ewing.

MSH April Employees of Month



DIRECT CARE
TOYA SPANN-LEWIS
BUILDING 201/1, A-SHIFT

Toya Spann-Lewis has been named Mississippi State Hospital's April Employee of the Month for Direct Care.

A lifelong resident of Brandon, Spann-Lewis attended Brandon High School, Hinds Community College, and Holmes Community College. She serves as a Support Care Professional Team Lead in IPS and has been employed at MSH since 2011.

"Ms. Lewis is a very dedicated worker and excellent leader that makes sure all job duties are complete. She is great with her staff, nurses, and patients. Ms. Lewis is always on time for work and sometimes comes in on her day off when the building is short-handed to help out with coverage," said Nieshia Taylor, who nominated Spann-Lewis. "Ms. Lewis works in the pantry when the units are short on pantry staff to make sure the patients are served their meals. Ms. Lewis has great customer service skills and is great at teamwork to make sure the unit is running as smoothly as possible. Ms. Lewis is appreciated for her contribution and hard work at MSH."



SUPPORT SERVICES
BRANDIE GIBBS
BUILDING 79, A-SHIFT

Brandie Gibbs has been named Mississippi State Hospital's April Employee of the Month for Support Services.

Gibbs lives in Brandon, but claims Pearl as her hometown. She attended Pearl High School. She serves as a Custodian in Environmental Services and has been employed at MSH since 2004.

"I am pleased to nominate Brandie Gibbs for Employee of the Month! I believe Brandie is the best person for this award because of her dedication to the job, her organizational skills, her hard work ethics, and she performs consistently well. Brandie is a friendly, respectable co-worker who always has a smile on her face. We can count on Brandie to keep the building looking and smelling good. For these reasons alone, Brandie is the person to receive Employee of the Month for Support Services," said Dawn Traxler, who nominated Gibbs.

CLINICAL SERVICE
CHARLOTTE TRAVIS
BUILDING 90/1, A-SHIFT

Charlotte Travis has been named Mississippi State Hospital's April Employee of the Month for Clinical Service.

Travis is a lifelong resident of Jackson. She attended Jim Hill High School, the University of Southern Mississippi, Jackson State University, Hinds Community College, and Mississippi University for Women. She holds an Associate's degree in Nursing, a Bachelor's degree in Biology and a Bachelor's degree in Nursing. She is a Registered Nurse in IPS and has been employed at MSH since 2020.

"Charlotte Travis is dependable and cares about the patients' well-being," said Tiffany Chambers, who nominated Travis.

MSH Nurse Appreciation

National Nurses Week was May 6-12



Building 31 – Jaquith Nursing Home Karen Rosse (RN),
Glory Glass (LPN)



Building 78 – Jaquith Nursing Home Jana Hinton (RN), Belinda Dille (LPN), Deborah Rhodes (RN)



Building 33 – Jaquith Nursing Home Joy Allen (RN),
Renee Pickell (LPN)



Building 87 – Forensics Deron Harmon (RN),
Davina Thompson (RN)

By: Julie Cox

MSH wishes to recognize and thank our dedicated nurses for your continued care of our patients and residents every day. Nurses are often the first and last person a patient sees during a hospital visit. Nurses are truly the rockstars! According to the American Nurses Association, there are over 4 million working nurses in the United States today, nurses make up the highest percentage of the US healthcare workforce. Ms. Angela Howell, Nurse Executive at MSH, shared that, “Nurse Appreciation Day is a special day set aside to say thank you for the dedicated commitment, compassion, and diligence delivered to our Community and the Nursing Profession. Their dedication is both humbling and inspiring.”

There are a multitude of settings where

you might find a nurse working: hospitals, schools, clinics, home health, nursing facilities, and the list goes on. Recently, while meeting with our Directors of Nursing (DONs), they all agreed that what makes the nurses at MSH unique is the community-minded environment and the special populations that we serve. One DON noted that, “We still provide those same services (as other healthcare facilities outside MSH) but I think one great thing about here is that we are a community. We often have nurses that leave and then return because of the sense of community here.”

Ms. Kathy Peacock, who serves as the Nurse Administrator at Jaquith Nursing Home (JNH), has worked in the private sector for the majority of her career. She

came to MSH about four years ago and remarked that, “MSH has an excellent orientation program. You know what to expect from the day you walk in the door. Many facilities do not provide adequate orientation and this can cause frustration and burnout for nurses.” The same can be said for training, MSH Nursing Services has a constant stream of training, with the topics of interest coming directly from the nurses themselves.

Most everyone has seen in the media how Covid has taken a toll on the nursing profession, who serve as the front line workers. But it also provided an opportunity for nurses to prove how innovative they can be and raised expectations of what nurses can do. During the height of Covid,

with processes and protocols constantly changing, MSH nurses kept their eye on the patient and found ways to provide quality care and keep themselves and their patients safe.

Our nurses are the frontrunners of caring for patients and residents at MSH. Without them our doors would not be open. While nurse recruiting has been difficult, it's not all bad news. During Covid, we saw a decrease of services because of closed buildings and lack of staffing, but we are now in the process of hiring nurses and getting our staffing back up. We've had previous nursing employees come back as full time employees. We've also seen several contract nurses request to become full time.

While we are thankful for our dedicated MSH nurses all year long, we took the week of May 6-12 to celebrate each of them and shine a spotlight on their commitment to the patients and residents at MSH and thank them for the valuable role they play as part of the healthcare team. Any way you slice it, we are very grateful for our nursing staff!

Angela Howell, Nurse Executive, and the Directors of Nursing hosted a special Nurse Appreciation Day on Wednesday, May 10 and served all our MSH nurses a meal of pizza, salad, chips, and cupcakes. They also held drawings for door prizes throughout the day.

THANK YOU
TO OUR
FRIENDS OF
MSH, Inc.
CORPORATE
SPONSORS



BankPlus®

cura
hospitality





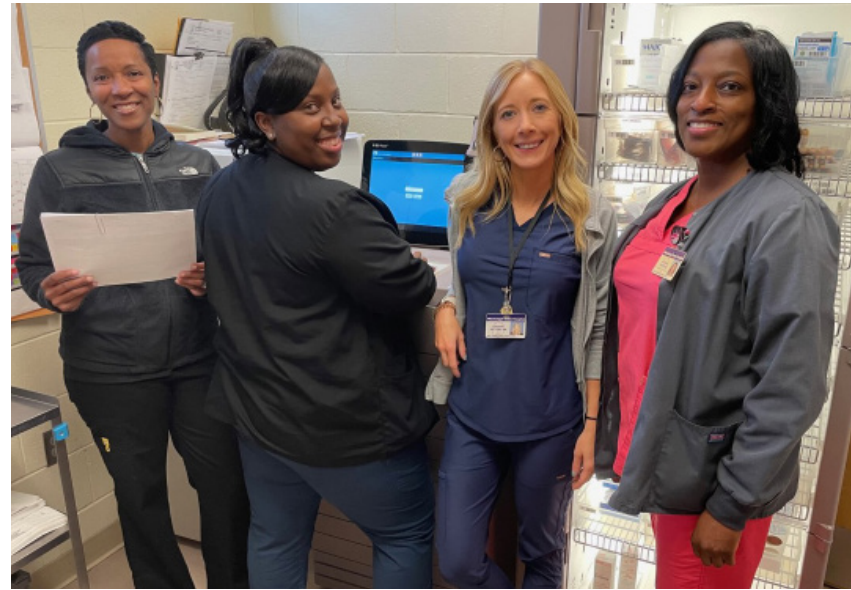
Building 34 & 28 – Jaquith Nursing Home Regina Ann Pinion-McDaniel (RN), Norma Chism (RN), Lavon “Joy” Danson (LPN), Jennifer Cashion (LPN)



Building 81 – Substance Use Services, Adult Female, Hollie Vanderford (DON), Haley Dyess (RN), Dena Rast (RN), Sarah Larochelle (RN)



Male Receiving Kimberly George (RN), Chelsea Aldridge (RN), Angie Hartley (RN)



Female Receiving Chiquita Boyd (DON), Katherine Henderson (LPN), Jordan Sutton (RN), Wonda McKie (RN)



Female Continued Treatment Ashley Lilley (DON), Clay Menzik (LPN), William Boykin (LPN)





February 2023 Service Awards



L to R: Mary Ashley Angelo, Cedric L. Lockett, Pamela D. Henderson, William H. Parker, Kewan Nasha Ewing, Barry Barnes, Melita Ann Breeden.

FEBRUARY

NAME	YRS
DEJA M DAY	1
DENEISHA D GILLUM	1
DANNY DEKOTA TAILORE JOHNSON	1
NATASHA ELLZEY JEFFERSON	1
MARY ASHLEY ANGELO	10
BARRY BARNES	10
WILLIAM H. PARKER	15
CEDRIC L. LUCKETT	15
ANDRIENA CHERIE FLEMING	15
KEWAN NASHA EWING	15
MELITA ANN BREEDEN	20
PAMELA D. HENDERSON	20
ELAINE WILSON	25

March 2023 Service Awards



L to R: Irma Mae Stewart, Shaun M. Purvis, and Laura M. Johnson

MARCH

NAME	YRS
SHAUN M PURVIS	1
DARRELL P BULLOCKS	1
TRISTIAN ANDRE LAPARIS FLAVELL	1
TREVOR RESHOD SMITH	1
JAMIRAH KARNEISHIAQUAS WILLIAMS	1
KYSHA L WALLACE	5
MILTON ROBBINS	5
LAURA M. JOHNSON	10
JUDY LYNN STOKES	15
LYDIA L. TAYLOR	20
ELIZABETH HENRY	20
JACKIE C. DYESS	25
IRMA MAE STEWART	25
STEPHANIE K. OSCAR	25

April 2023 Service Awards



L to R: Kendrick Monate Mccoy, Jeanifer Smith Watkins, Kevin W. Frazier, Clarice Shirley Erving, Linda Thames Evans, Michelle Larae Jackson, Stephanie Oscar, Norman Jeffery Luckey, and Diana Addison Hunter.

APRIL

NAME	YRS
MYKAILIA NAJHE WALKER	1
CAMMIE RAYNE ADAMS	1
TITUS DEMONTRA LEE	1
MICHELLE LARAE JACKSON	1
CHRISTOPHER LYNN MICHAEL	5
LINDA THAMES EVANS	5
CHITARA SHENAE JENKINS	5
JIMMIE MARTESS GREEN	5
KENDRICK MONATE MCCOY	10
CAROLYN JEAN PACK	20
NORMAN JEFFERY LUCKEY	25
CLARICE SHIRLEY ERVING	25
KEVIN W. FRAZIER	25
JEANIFER SMITH WATKINS	25
DIANA ADDISON HUNTER	30